



SUMMER 2011

confluence

A newsletter of the Magnes Collection of Jewish Art and Life

THE BANCROFT
LIBRARY,
UNIVERSITY OF
CALIFORNIA,
BERKELEY

Dream to reality: The New Magnes



Dear Friends,

From our standing-room-only lecture program to our inaugural exhibition at the Bancroft Library Gallery in March, we have made a seamless transition to our new home at the University of California at Berkeley.

We are already leading hard-hat tours of Magnes Collection's new building in downtown Berkeley, which will feature beautiful gallery and event spaces as well as study rooms and open storage of our world-class collection of Judaica, sculpture, painting, graphics, and artifacts from all over the globe. The most common thing we've heard from our loyal donors and community friends on the tours? "It's a dream come true."

And indeed the dream is very quickly becoming reality: The museum and research center at 2121 Alston Way will be open to the public January, 2012. It will represent the culmination of the vision, commitment, and work of countless individuals at UC Berkeley, the Bay Area community, and beyond. We really look forward to celebrating this important occasion with you.

Whether you were a member of the former Judah L. Magnes Museum or a friend of the new Magnes, we thank you and invite you to stay connected to us during this exciting, transformational time.

Alla Efimova

JACQUES AND ESTHER REUTLINGER DIRECTOR



Where knowledge inspires
www.magnes.org

The Inaugural Exhibition **Gained in Translation: Jews, Germany, California circa 1849**

THROUGH JULY 4, 2011

The Magnes' inaugural exhibition on UC Berkeley campus drew on art, artifacts, books, and archival materials from The Magnes Collection of Jewish Art and Life, The Bancroft Library, and the Levi Strauss & Co. Archives. The resulting synergy stretched the boundaries of California history, connecting German Jewish

“This was an excellent exhibit for the beginning of the new Magnes/Bancroft Library alliance. It was wonderful to have the opportunity to view the history of our California Jewish families who are still involved and making a difference in our community today.”

—LEN AND ROBBIE COHN

Gibbons, M.D. “He tracked down objects from the Magnes collection that were represented in the painting, and from this, spinning out a whole portrait of German-Jewish life and its connection with California history. The exhibit highlighted most beautifully the promise of the collection, and the rich treasury of stories yet to be told!”

“My two sisters and I converged on the Magnes exhibit from various parts of the Bay Area, just as our great-grandparents had on San Francisco in the middle of the 19th century. The material on display really helped us understand what they found and helped create.”

—PATRICIA BERKOWITZ

history before 1849 to the establishment of the Jewish community in the San Francisco Bay Area.

“It was absolutely fascinating the way the curator, Francesco Spagnolo, was able to tie the exhibit to its centerpiece, Oppenheim's painting, Lavater and Lessing Visit Moses Mendelssohn,” said Tricia



PHOTOS BY EVA GUREVICH





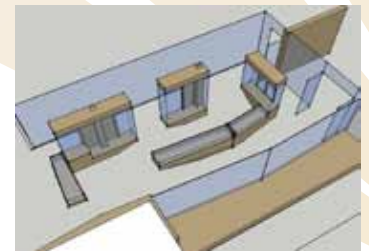
The New Magnes Takes Shape

Construction is humming along over at 2121 Allston Way, the downtown Berkeley home of the new Magnes set to open in January, 2012.

One of the most exciting things happening inside is the construction of the open collection storage and exhibition cases designed by Paco Prieto of Pacassa Studios in Oakland. Prieto, who's been doing woodwork design and construction for 25 years, knew from the start that the Magnes was going to be a great project. "At my studio, we take things very seriously, but there is always a sense of lightness to our work, something to smile about," he says. "And our first meeting with the Magnes couldn't have been any more fun."

Part of the fun for Prieto was everyone's willingness to think outside the box, from the project architect to museum staff. "I came in and said, 'We're going to do something no one's ever seen before—we're going to hang these things from the ceiling,'" he recalls. "Alla and her team immediately joined in, and together we honed the project to create something everyone loves."

That collaborative process is a perfect representation of the bigger mission of the Magnes to bring together scholars and the community. In fact, the designs themselves have been created to foster that connection. "We wanted the displays to be as interesting and interactive as possible to make the Collection as accessible as possible," says Prieto.



Touch Wood

It's fitting that the wood Prieto chose for the Magnes project is elm. "We chose it because of the Magnes' history of being in the Elmwood district in Berkeley," he says.

But this isn't just any elm. It's northern California elm from Arborica, Evan Shively's salvaged wood mill in Marshall, California. The wood being used for the Magnes has been "curing" for almost six years. After sitting in the wood yard for a couple of years, the logs were sawn

into slabs. They sat for another two years before being kiln-dried and then put out to "rest" for another year. "Evan has been preparing it for months, working to perfectly control the moisture content," says Prieto. "It's kind of like freshly baked bread."

Shively is a true artisan, and the wood he reclaims and crafts is in high demand throughout California. "This wood just couldn't be any more special," says Prieto.



"I love when people see my work and ask, 'How did he do this?!'"

—PACO PRIETO



PHOTOS BY ALLA ERMOVA

Magnes Collection staff
on a visit to Arborica.

Instrumental Research

Listening in on Carla Shapreau's Recent Pell Lecture



Carla Shapreau and Erich Gruen at the post-lecture reception.

converging,” Shapreau says. “I have been a violin maker for several decades and an attorney with experience in recovering lost art and one Stradivari violin. One day I was asked if I would conduct research regarding the provenance of a historically important violin. It didn’t take long before I realized that, unlike the field of research regarding Nazi Era looted fine art, musical material cultural losses during that time have received sparse attention.”

During the April 28th lecture, Shapreau gave attendees a glimpse into how confiscation and other tragic events

If you wandered by the Heyns Room at the Faculty Club a bit earlier this spring, you might have been tempted to linger as the rich sounds of piano, violin and cello filled the hall. The composition by Edwin Geist, a musician killed by the Nazis and only recently rescued from obscurity, was performed by students at UC Berkeley’s Music Department as a fitting end to the talk by Carla Shapreau: *When the Music Stopped: The Spoliation of Europe’s Musical Property, 1933-1945, and 21st Century Concerns*.

Shapreau, who is on the adjunct faculty of the School of Law, talked about her research of the looting and displacement of musical manuscripts, printed music, and musical instruments during the Nazi Era.

“My interest in music-related losses is a result of several paths in my life

impacted the musical sphere and the lives of musicians. “The displacements of musical manuscripts, rare printed music, musical instruments and other musical materials are still reverberating in the 21st century, and much remains to be accomplished,” Shapreau says.

“It is often forgotten that the Holocaust wasn’t just an act of mass murder; it was a wholesale, massive theft that preceded the murder of the victims of that theft,” says Dr. John M. Efron, Koret Professor of Jewish History. “Shapreau’s research goes in a totally different direction and is quite cutting edge. No one has done this before.”

In addition to publishing the results of her research, Shapreau hopes to eventually develop an online resource where information regarding still unresolved music-related losses will be aggregated, freely accessible, and open to international collaboration.

The lecture was co-sponsored by The Joseph and Eda Pell Endowed Fund for Holocaust Studies and the Alfred Manovill Holocaust Studies Program at the Magnes.

› **Keep up to date with all of our sponsored events: www.magnes.org**

Conversations with the Curator

One of the true delights of our work is making a discovery right in our own backyard. **Francesco Spagnolo**, PhD, Curator of Collections, knew he had just such a find when he got a call from **David Nigel**. Nigel, a former commissioner of the Jewish Youth Athletic League (JYAL) of San Francisco, had been collecting artifacts from the JYAL along with another former commissioner, Bill Black. He was looking for a caretaker for the materials: *Jewish Youth Athletic League*, ca. 1969-1996.

FS: What prompted you to start collecting these materials?

DN: From the 1930s through the early part of the 1990s, athletics—and particularly the sport of basketball—was an important part of life for the synagogue congregations of San Francisco, San Mateo County, Marin, Sonoma, and Contra Costa. Bill Black and I had been collecting photos, written histories of the league, documents, uniforms, scorebooks, and other memorabilia for years in an effort to preserve this rich tradition.

FS: How did you choose the Magnes?

DN: We did an exhaustive search for the best place to donate our collection. The Magnes' mission to preserve and display items related to Jewish life made it the perfect partner for us.

FS: What would you say about the process of making a donation of this kind?

DN: It has been an extremely positive experience. I learned so much about the work of the Magnes through my interactions with the exceptionally capable staff. I know our collection is in the very best hands.



DAVID NIGEL - Jewish Youth Athletic League
born Hawaii 2/8/1939 * Long Black was involved (now SF Giants)
(Nignievitsky) * Marshall Kuhn oral history (Roth?) July 1993

1969 — 1996 Started late 1930's

[TEMPLE] BETH EL [SAN MATEO] Jersey (#) 1

came to Seattle 1939, moved to SF 1947. 1953 family moved to Manila. Returned to SF 1957 — worked at Strawberry Canyon in Summer (Recreational Sports) 1968-1990 — worked as a teacher (3rd-8th grade) in the Peninsula — Taught children's literature for school teachers at SFSU.

Became involved with JYAL while teaching Peninsula Temple Shalom in 1971. Became assistant coach in 1972, then commissioner in 1980-1990. Only children who attended Sunday school were admitted to the sports activities.

Park Commissioner for the City of San Bruno since 1970, President of California's Schoolmasters' Club in 1984-85.

TOP: A piece from the collection: The 1971 basketball team of Congregation Sherith Israel of San Francisco. BOTTOM: Spagnolo's notes from meeting with David Nigel.

Friends of the Magnes

For more than half a century, the Magnes has provided access to unique resources that have allowed each generation to find its own story in the rich texts, vibrant images, and unique sounds of Jewish culture.

Your generosity today will help the collection thrive as a treasured resource that advances research, scholarship, and innovation for years to come. You will receive exclusive privileges, such as advance notice of events and recognition in the Magnes newsletter and on its website. Additional benefits—including invitations to the annual Friends of the Magnes appreciation event, special exhibition preview events, and luncheons with scholars, artists, and curators—are available at various giving levels.

With the opening of the new building, the coming year is going to be momentous for the Magnes. This is a once-in-a-lifetime opportunity to help the Magnes offer unprecedented access to Jewish history and culture.



Amulet, Morocco, Tangiers, n/d

We would be honored to have you join us at any level. You can **GIVE ONLINE** or send your donation to The Magnes Collection of Jewish Art and Life, The Bancroft Library University of California, Berkeley, CA 94720-6000.

Support the Magnes Collection with a tax-deductible gift at the following levels:

Fellows—\$100

- › Advanced notice of Magnes Collection events and news
- › Invitations to exhibition openings
- › A subscription to the Magnes Collection newsletter, Confluence
- › A subscription to the Bancroft Library's newsletter, Bancroftiana

Scholars—\$250

- All of the Fellows benefits, plus:
- › Recognition in the Magnes newsletter, Confluence
 - › Receive a Keepsake, a printed volume of a unique manuscript or a rare document owned by the Bancroft Library

Conservators—\$500

- All of the Scholars benefits, plus:
- › Recognition on the Annual Fund plaque in the Magnes Collection lobby

Curators—\$1,000

- All of the Conservators benefits, plus:
- › Private exhibition preview with museum curators

Collectors—\$2,500

- All of the Curators benefits, plus:
- › Luncheon with a noted scholar, artist, or performer

Director's Circle—\$5,000

- All of the Collectors benefits, plus:
- › Director-led preview of upcoming exhibitions and programs

Partner's Circle—\$10,000

- All of the Director's Circle benefits, plus:
- › Intimate dinner with the Magnes Collection's and the Bancroft Library's directors

Visionary Circle—\$25,000

- All of the Partner's Circle benefits, plus:
- › Opportunity to host a private event in the Magnes Collection building

Donor Spotlight: Deborah Kirshman



There are few supporters who have as deep a history with the Magnes as Deborah Kirshman. Her parents, Leo and Florence Helzel, were founding supporters of the Judah L. Magnes Museum,

and her mother also served as curator of the prints and drawings collection for 20 years. “My commitment to the Magnes is, in large part, to continue my parents’ extraordinary legacy,” says Kirshman, who is also chair of the Helzel Family Foundation. “They had a great dedication to and belief in the significance of a Jewish collection and the Magnes’ vital holdings.”

Kirshman, who recently retired from serving as Director of Development at the University of California Press, also worked as UC Press’ art history editor and directed UC Press’s museum co-publications program. And it is her own long career with UC that makes her even more excited about the Magnes-UC partnership. “The Magnes has always been an important repository and exhibitor of art and Judaica,” Kirshman says. “However, it was limited in terms of its reach. It is really exciting to see how the new Magnes is already benefiting from the accessibility created by the collaborations between the scholarly world and the community at large.”

Kirshman sees a rich opportunity for donors to make a contribution through the new Friends of the Magnes campaign. “This is a once-in-a-lifetime chance to join at the ground level and play a meaningful role in the development of the new Magnes,” she says. “The Magnes is creating a building—and a presence—that is going to be very inventive and multi faceted, and donors can take part in everything from making innovative exhibitions possible to expanding the holdings to helping grow the audience. This is a new beginning.”

Visiting Scholar Helps Hone Collection Resources



Rabbi **Jessica Zimmerman**, who is working on her Masters in Jewish Art and Visual Culture at Jewish Theological Seminary of America (JTSA), spent the spring 2011 semester working as an intern at the Magnes. Her work was focused on the Jews in Karala, India holdings, which resulted from a series Judah L.

Magnes Museum collecting missions in Southern India during the 1960s and 70s. The collection includes archival papers, books and objects that document everyday life as well as synagogue life.

Zimmerman, who is director of congregational engagement for Synagogue 3000, worked to consolidate and integrate the various holdings to streamline access to the collection. She also worked to make the images on the Magnes’ Flickr site more robust.

“A few years ago I served as a visiting rabbi with the Liberal Jewish community in India and I’ve long since had a passion for learning more about Indian Jewry,” Zimmerman said.

“The Magnes has a really amazing collection of Indian Jewish artifacts, and I was really excited to be able to help make it more accessible to scholars.”

Zimmerman’s passion is studying Jewish communities through their ritual objects and their surrounding larger cultures across the globe—throughout the centuries. She’s pursuing her degree to enrich her ability to teach and to serve communities abroad.

“Jessica is devoted to the future of the Jewish community in the United States,” says Dr. Vivian Mann, Zimmerman’s thesis supervisor at JTSA. “I’m pleased she was able to make a contribution to the Magnes’ reinvention of itself as part of the University of California at Berkeley and I’m personally grateful to the Magnes for making this internship possible so that our Master’s program is now more closely linked to the Magnes.”

Zimmerman agrees. “The Magnes is a very interesting place in so many ways,” she said. “Becoming part of the larger Berkeley research system has given it a much richer home. I feel very fortunate to have been working with the Magnes at such an exciting time.”



FROM LEFT: Torah Ark, Cochin, India, 17th C.; Torah Binder, Germany, 1814; Torah Ark Curtain, Germany, 1850; Amulet, Italy, 18-19th C.

Magnes Supporters

Campaign for the Magnes Donors

Lorry Lokey
 Bernard and Barbro Osher
 Irv and Varda Rabin
 Reutlinger Foundation
 Albert Schultz
 Leo and Florence Helzel
 Mathilde Albers
 Sanford and Jean Colen
 Jewish Community
 Endowment Fund
 Jack Petranker
 Donald and Carole Chaiken
 Toole Family
 Morton and Amy Friedkin
 Charles Michael
 Walter and Elise Haas Fund
 Barry and Marjorie Traub
 Amnon and Katie Rodan
 Joseph and Sherry Felson
 Rick and Claudia Felson

Elliott and Suzanne Felson
 Moses and Susan Libitzky
 Anita and Marc Abramowitz
 Gary and Dana Shapiro
 Joseph and Eda Pell
 Barry and Debbie Cohn
 Janet Traub
 Cher Wang
 Steven and Victoria Zatzkin
 Leonard and Roberta Cohn
 Norman Coliver
 Frances Dinkelspiel
 Gerald and Miriam Friedkin
 William and Frances Green
 Daniel and Nancy Katz
 Alice Kessler
 Marianne and Herb
 Friedman
 Ralph and Eileen Battat
 Clarence and Joan Coleman
 Jackie and Bruce Horwitz
 Frederick Weiss

Linda and Michael Baker
 Felix and Sue Warburg
 Jay and Judith Espovich
 Bernice Greene
 Adele Hayutin
 Vera Zatzkin
 William and Susan Epstein
 Edwin and Sandra Epstein
 Marvin Cohen and
 Suzy Locke Cohen
 Steven Hallert and
 Phyllis Harford

Friends of the Magnes Donors

VISIONARY CIRCLE

The Hellman Family
 Foundation
 Koret Foundation
 Raymond Lifchez
 The Magnes Museum
 Foundation

Taube Foundation For
 Jewish Life and Culture

PARTNERS' CIRCLE

Jewish Community
 Federation of San
 Francisco, the Peninsula,
 Marin and Sonoma Counties
 Lumina Foundation
 Barry and Marjorie Traub
 Judith and Mark Yudof

DIRECTOR'S CIRCLE

Dana and Gary Shapiro
 Janet Traub

COLLECTORS

Jim Joseph Foundation
 Joan and Roger Mann
 Mary Ann and
 Bertram Tonkin

CURATORS

Ronald and Sue Bachman
 Barry and Debra Cohn



Frances Dinkelspiel
 Steven and Pamela
 Dinkelspiel
 Delia Ehrlich
 Rosalie Eisen
 Frances and William Green
 Douglas and Lisa Goldman
 Colleen and Robert Haas
 Adele Hayutin
 Luso-American
 Education Foundation

CONSERVATORS

Gale Antokal
 Richard Berman
 Robert and Eva Bloch
 Richard Buxbaum
 William and Susan Epstein
 Michael and Bernardine Fein
 Theodore and
 Francis Geballe
 Aaron and Frances
 Greenberg

Sinai Memorial Chapel
 Ilene Weinreb
 Victoria and Steven Zatzkin

SCHOLARS

Robin Berry
 Leonard and Roberta Cohn
 Adele Corvin
 Paul and Selma Forkash
 Arthur and Miriam Gauss
 Theodore and Lym Kotzin
 Marion Kramer
 Fred Levinson
 Barbara Meislin
 June Neuhaus
 Steven Oliver
 William Ringer
 Dorothy Saxe
 Douglas and Lisbeth
 Schwab
 Arthur and Elizabeth
 Stander
 Mel Wacks

Magnes Staff



Alla Efimova
*Jacques and Esther
 Reutlinger Director*



Francesco Spagnolo
Curator of Collections



Eva Gurevich
*Programs and Events
 Coordinator*



Julie Franklin
*Exhibitions
 Coordinator*



Lara Michels
Archivist



Paul Hamburg
*Librarian for the
 Judaica Collection*

Confluence, Summer 2011

Editor: Laura Scholes
www.storyhousecreative.com

Designer: Lacey Rainwater



ON THE COVER: THE CREATION BY ORI SHERMAN, 1986-88



THE MAGNES COLLECTION OF JEWISH ART AND LIFE

The Bancroft Library • University of California • Berkeley, CA 94720-6000

www.magnes.org